

# Best of both

# Balm x Foam



Fusion of balm that creates and maintains shine,  
and foam that defines curls.  
Achieve salon-quality stylings easily at home.

Foam...  
// but Balm!?



## 1 Nuance

Perfect balance of piecey texture,  
natural shine, and airy look

## 2 Defined curl

Create defined, well-shaped  
curls just as you like

## 3 Curl revival

Style your curls freely,  
even after 2 weeks



MarkU

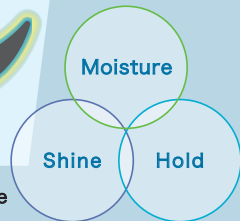
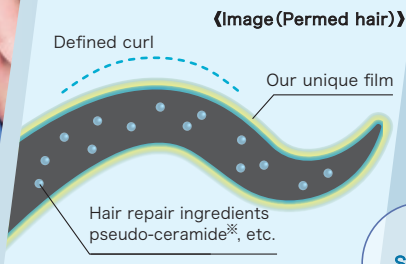
# Revive your curls with effortless styling and create soft, airy curls



Lightweight foam that blends evenly into the hair

Lightweight, resilient foam precisely designed with an optimal Balm & Foam balance. It distributes evenly through the hair, you can create any nuance with ease.

Maintain moisture with ARIMINO's unique formula



Retain moisture with ARIMINO's unique "Triple Film Formula" that locks in hair repair ingredients. Keeps naturally shiny, well-defined curls all day.

\*Ceramide NG, Ceramide NP, Ceramide AP

CHECK!



Styling movie

## 2 types to choose from for your styling needs!



HARD



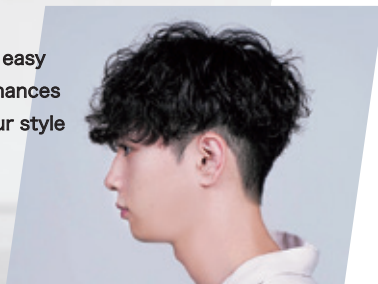
MEDIUM

Mix both freely!

### BALM FOAM HARD

120g

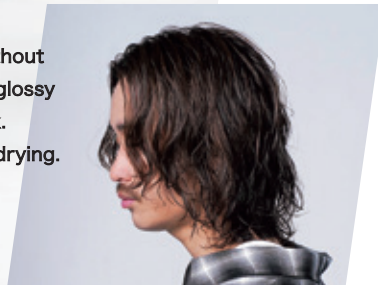
Hard hold yet smooth and easy to style. Its strong hold enhances defined curls and keeps your style all day.



### BALM FOAM MEDIUM

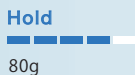
120g

Create nuanced texture without hardening, leave a relaxed, glossy movement for a natural look. Ideal as a base before blow-drying.



Firm hold yet moderate luster

#### GEL GREASE

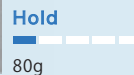


80g



Moisturizing yet provides a light finish

#### BASE MILK



80g

## Lineup

ARIMINO