



Today' s products

Check

HARD SPRAY
160g



Check

FREEZE KEEP GEL
200g



Check

FREEZE KEEP GREASE
100g



Check

HARD BALM
60g



Check

HARD MILK
100g



ARIMINO *Men*




Long-lasting freshness
ARIMINO MEN Styling Series

ARIMINO

ARIMINO Co.,Ltd

1-5-22 Shimo-Ochiai Shinjuku-ku Tokyo 161-0033 TEL. 03-3363-8211(main)

www.arimino.co.jp  www.facebook.com/arimino.jp

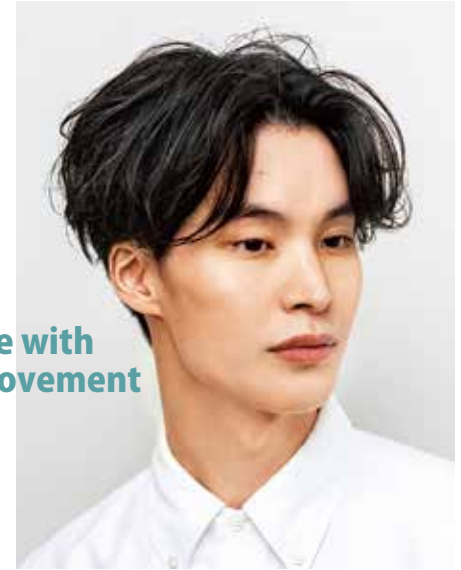
The impression of men starts from the hair

People judge the appearance and impression of men by their hair and odor.

5 types of ARIMINO MEN styling series produce you to suit your business and lifestyle.

ARIMINO *Men*

ARIMINO MEN Styling Series



Sexy style with gloss and movement

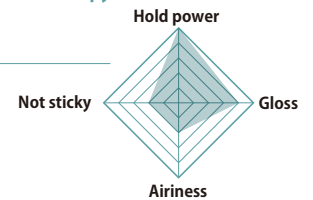


FREEZE KEEP GREASE

Provides excellent hold but does not crispy.

Creates wet, gloss look.

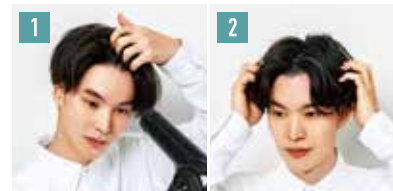
〈 Hold Power ★★★★★〉
100g



Masks the odor and retains the pleasant fragrance
Fragrance Styling

- 1 From sebum, sweat
Masking odor
- 2 The pleasant fragrance
Maintain Citrus • Musk fragrance

Tips for hair styling



- ① Blow dry to rise the roots of the hair.
- ② Spread GREASE on the palms, and apply to hair.



before

Tight & Formal style



Casual style with movement



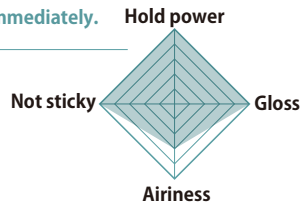
Effortless style + Hard hold



FREEZE KEEP GEL

Creates a lively gloss hairstyle without stickiness but does not coagulate immediately.

Hold power ★★★★★
200g



Tips for hair styling



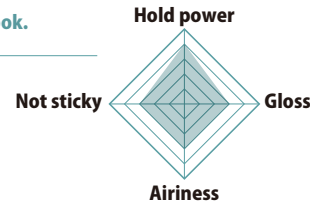
- ① Apply GEL to damp hair.
- ② Part hair and style.



HARD MILK

Spreads to the tip of the hair, and creates just the right choppy, wet look.

Hold power ★★★★★☆
100g



Tips for hair styling



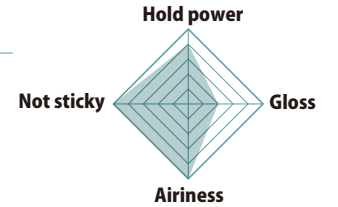
- ① Apply MILK to hair like wrapping hair ends from below.
- ② Shape and manipulate hair into desired style.



HARD SPRAY

Keeps the hairstyle strongly even on windy and damp day.

Hold power ★★★★★☆
160g



Tips for hair styling



- ① Apply to hair.
- ② Apply to hair roots to add more volume.



before



Natural movable style

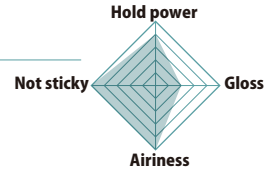
Provides excellent hold and very pliable for best styling



HARD SPRAY

Keeps the hairstyle strongly even on windy and damp day.

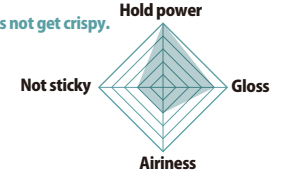
Hold power ★★★★★☆
160g



FREEZE KEEP GREASE

Provides excellent hold but does not get crispy. Creates wet, glossy look.

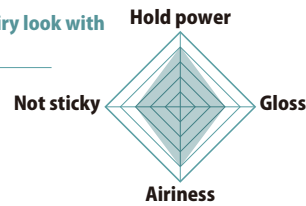
Hold power ★★★★★
100g



HARD BALM

97% of the ingredients are derived from natural origin. Creates airy look with natural gloss.

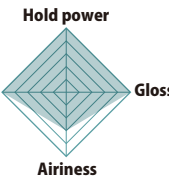
Hold power ★★★★★☆
60g



FREEZE KEEP GEL

Creates a lively gloss hairstyle without stickiness but does not coagulate immediately.

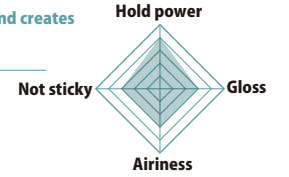
Hold power ★★★★★
200g



HARD MILK

Spreads to the tip of the hair, and creates just the right choppy, wet look.

Hold power ★★★★★☆
100g



Tips for hair styling

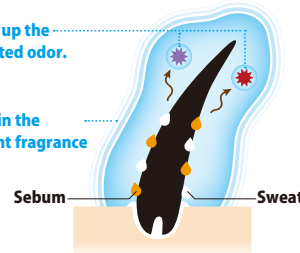


① Apply BALM to hair from middle parts to hair ends.

② Shape and manipulate hair into desired style.

① Wrap up the generated odor.

② Retain the pleasant fragrance



Select plant derived ingredients

- Sugar cane polyphenol[®] (Sugar cane extract)
- Cyclodextrin[®]
- Rose polyphenol[®] (Rosa gallica flower extract)
- Green tea extract[®] (Tea leaf dry distilled solution)

※ Hair protect

Citrus Musk scent

Pleasant scent that lasts long.

Mask the odor produced

by effective fragrance.

