

# ASIAN COLOR FES PALE COLORS



## Clear Pale, Unlocked

ASIAN COLOR FES, which expands the potential for color expression with vibrant colors, now presents a new range of colors for creating pale tones. Unlocking soft shades and clear translucence. Even subtle high tones will turn out just as you envisage.



New colors unlock the possibilities  
for expressing soft pale tones!

CONTROL SERIES

CLEAR ASH CLEAR PINK

**NEW!**

CLEAR SILVER CLEAR BEIGE CLEAR APRICOT

**POINT** Vivid colors are not only things that ASIAN COLOR FES does well!  
Combine with vivid colors to create limitless possibilities for pale tones!

Combination image

CLEAR SILVER + PINK = Transparent pale pink

CLEAR BEIGE + PINK = Soft pale pink

CLEAR APRICOT + PINK = Mild pale pink



ASIAN COLOR FES CONTROL SERIES  
CLEAR ASH / CLEAR PINK  
CLEAR SILVER / CLEAR BEIGE / CLEAR APRICOT  
Oxidative Hair Color 85g each



WEB SITE



OFFICIAL  
INSTAGRAM



ARIMINO INTERNATIONAL  
INSTAGRAM

※Before using ASIAN COLOR FES... Thoroughly read instruction manual before using products.  
※Perform an allergy patch test every time you use the products.  
※Never use on anyone who has had an allergic reaction to a color product in the past.

※Photos and printed colors may differ slightly from actual results.



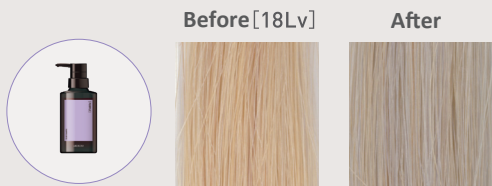
Color shampoo that maintains the beautiful changes in color that coloring on bleach makes possible.

- ▶ Pale shades correct and even out hair color after bleaching
- ▶ Even bleached hair is tangle-free and feels smooth after washing
- ▶ Formulated with hair repair ingredient “Betain”

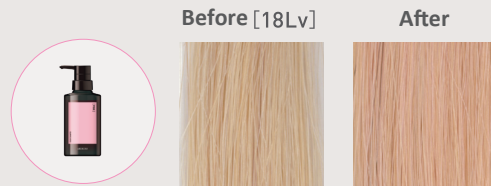
※Environment-friendly container BIO-PET

ASIAN COLOR FES COLOR SHAMPOO PURPLE / PINK  
280mL each

PURPLE

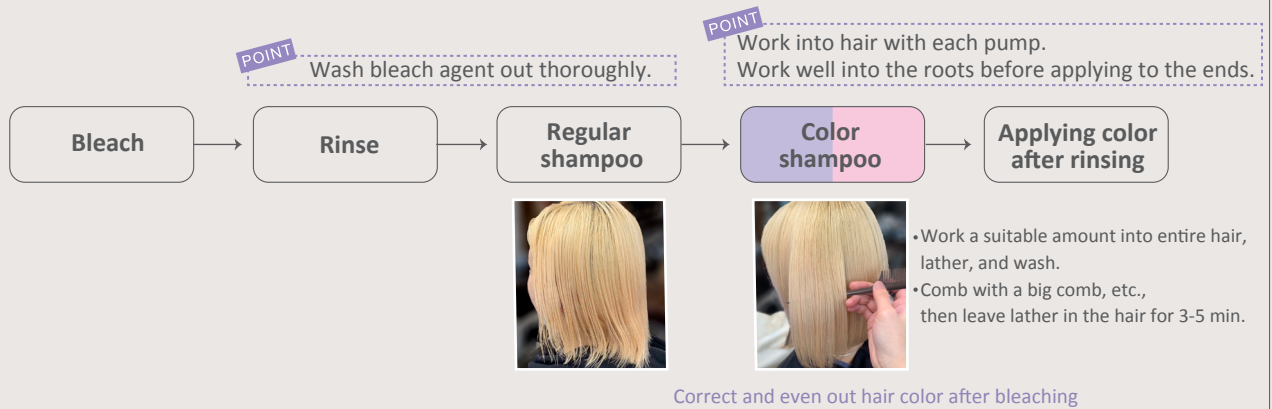


PINK

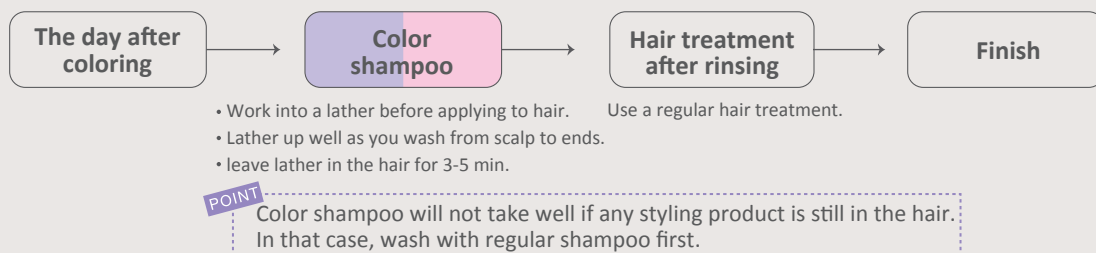


※The color gradually deeper with each use. ※After is an illustrative photo when used color shampoo for 3 consecutive days.  
※Finish may vary depending on hair color or hair condition before use. ※Photos may differ slightly from actual results.

SALON WORK Create the pre-coloring base for subtle pale tones.



HOME CARE Use 2-3 times a week from the day after coloring.



<Caution : Product may stain>

- If product gets onto bottle, floor, bathtub, tiles, mirrors, or other surfaces, wash off immediately.
  - If product gets onto skin or hands, wash off well with soap, etc.
  - If product gets onto clothing or other fabric, it will not wash out, so caution should be exercised.
  - Color may fade if hair gets wet from rain or perspiration, or if products such as hair growth agents or hairdressing products are applied.
- Color may stain clothes, hats, pillowcases, etc.

**ARIMINO**

ARIMINO CO.,LTD

1-5-22 Shimo-Ochiai Shinjuku-ku Tokyo Japan 161-0033 TEL.03-3363-8211(main)

www.arimino.co.jp